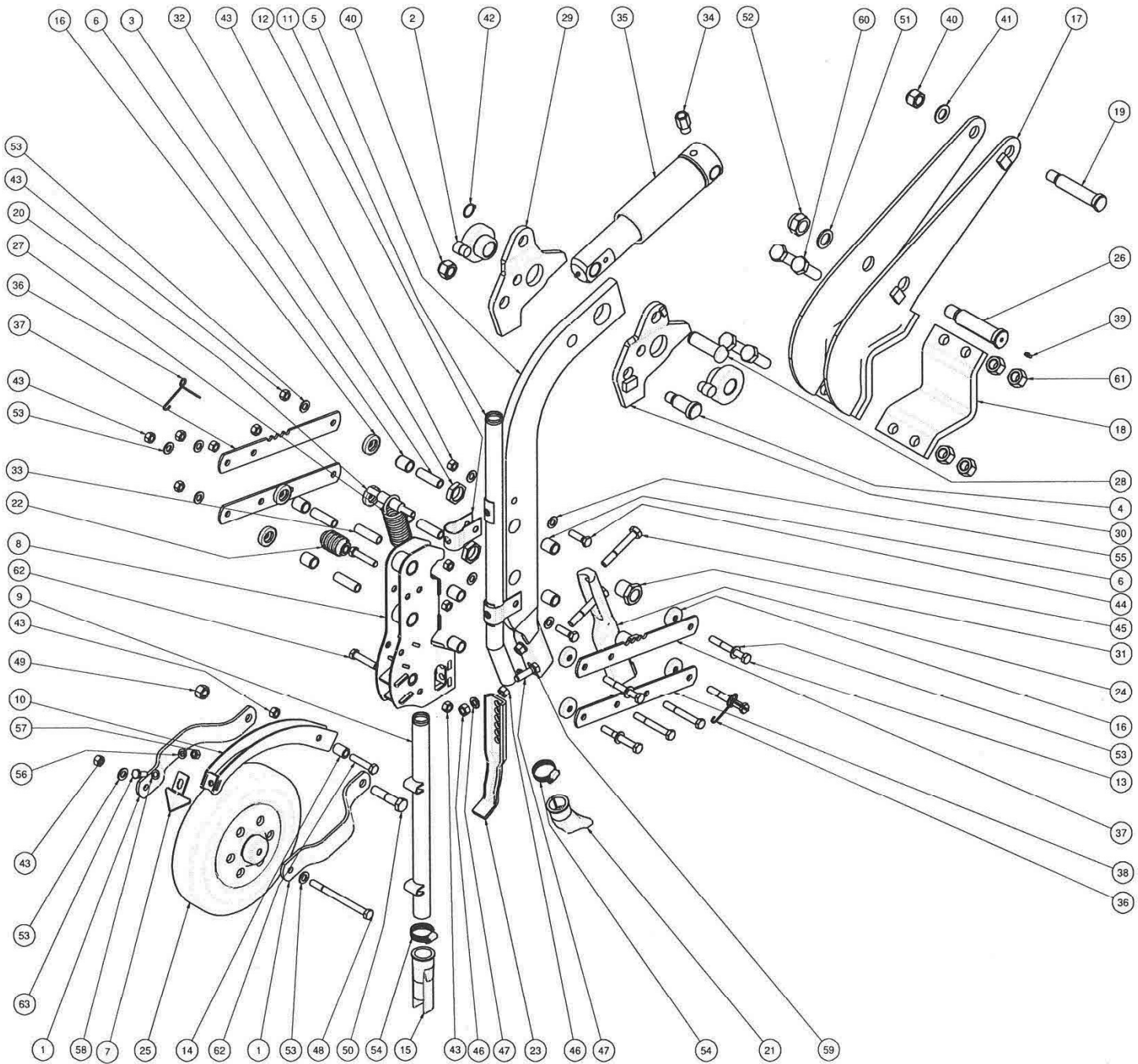


3.2 Tine Assembly V3 - Parts Listing



Version 3 Tine Parts Listing

Item	Qty	Part No	Description	
1	2	11131	PRESS WHEEL ARM STANDARD CURVED	
2	2	1125	BUSH ASSY - SHANK PIVOT	
3	4	1130	BUSH - SINTERED NICKEL	
4	1	1131	PIN - 25 x64 - SHANK SUPPORT	← PIN SET #01283
5	1	1132	SHANK	
6	8	1133	BUSH - SINTERED NICKEL	
7	1	11345	SCRAPER SWEEP TYPE - 50mm ASSEMBLY	
8	1	11350	RIB WELDMENT	
9	1	11351	SEED TUBE WELDMENT	
10	1	11365	SCRAPER ARM ASSEMBLY 300 STD WHEEL	
11	1	11367	FERTILISER TUBE WELDMENT	
12	2	11369	CLAMP- FERTILISER TUBE	← BOLT SET #01230
13	6	1138	BOLT-M12x90 - ZP	
14	1	11428	SPACER	
15	1	11446	SEED BOOT	
16	8	1150	SEAL CAP ASSEMBLY	
17	1	1160	PIVOT BRACKET ASSY	
18	1	1162	CLAMP PLATE- PIVOT BRACKET	← PIN SET #01281
19	1	1179	PIN - JUMP CYL BASE	
20	1	1217	PIN - SPRING HOLDER	
21	1	12344	FERTILISER TUBE BOOT	
22	1	12788	STOPPER ASSY	
23	1	12813	CLOSING TOOL 30mm ASSY	
24	1	1288	BLADE ASSY - DBA 27-130 (7 INCH)	
25	1	1352	PRESS WHEEL- 50mm	
26	1	1368	PIN SHANK PIVOT - DIA30 x LGTH102	← PIN SET #01282
27	1	1389	SPRING - TENSION 5.6 x 42 x 120	
28	1	1436	PIN - 25 x75 JUMP CYL ROD END	← PIN SET #01456
29	1	1437	CHEEK PLATE - LEFT	
30	1	1438	CHEEK PLATE ASSEMBLY - RIGHT	
31	2	1463	HOUSING SHANK BUSH	
32	2	1464	NUT-SHANK BUSH HOUSING	
33	1	1495	SPACER BUSH	
34	1	6016	VALVE - CUSHION RETURN	
35	1	6017	JUMP CYLINDER ASSEMBLY	
36	2	8141	RETAINING SPRING	
37	2	8925	SIDE ARM - UPPER 330	
38	2	8926	SIDE ARM - LOWER 330	
39	1	9001	GREASE NIPPLE 1/4 BSW	
40	2	9002	NUT - M20 - ZP - CONELOCK	
41	1	9003	WASHER-FLAT-M20-ZP	
42	1	9007	CIRCLIP-EXTERNAL-25X1.2mm	
43	12	9009	NUT M12 C8 ZP CONELOCK	
44	2	9011	BOLT M12x40 - G8.8 - ZP	← BOLT SET #05202
45	2	9012	BOLT 1/2"UNC x 3 1/2" ZP	
46	3	9014	NUT-1/2"UNC - ZP	
47	3	9015	WASHER SPRING -1/2"- ZP	
48	1	9016	BOLT-M12x150 - ZP	← BOLT SET #01460
49	1	9024	NUT-M16 - ZP - CONELOCK	
50	1	9025	BOLT-M1 6x 70 - ZP	
51	1	9029	WASHER FLAT-M24 - ZP	
52	1	9030	NUT-M24 - ZP - NYLOCK	
53	13	9031	Washer - Flat - M12 H/T ZP	
54	2	9086	HOSE CLAMP 19-44 WORM DRIVE-SS	
55	4	9108	WASHER FLAT - M12 - SS 316	
56	1	9130	WASHER SPRING - M10	
57	1	9131	NUT - M10 - ZP	
58	1	9141	WASHER FLAT M10 - ZP	
59	1	9155	BOLT 1/2 x 1 3/4" UNC G8 ZP	← BOLT SET #01211
60	4	9388	BOLT M20x60 C10.9 ZP	
61	4	9389	HEX NUT M20 C10.9 ZP	
62	3	9415	BOLT M12x55 GR8.8 ZP	
63	1	9430	BOLT M10x25 C8.8 ZP	